



ALUMINIUM SYSTEMS @  
**HUECK** Trigon 50 D



#### CONSTRUCTION

- Thermally insulating aluminium facade design as a mullion-transom construction for slanting, vertical or level curtain walls, with notching in transom area
- Identical profile geometry for mullion and transom
- Glass thickness between 20 and 58 mm
- Various insert elements possible

#### ELEVATION WIDTH

- Mullion/transom and cover profiles with an elevation width of 50 mm in various profile geometries

#### PROFILE DEPTH

- Depending on static requirements between 32 and 204 mm

#### INSULATING ZONE

- Insulating profiles made of glass fibre-reinforced plastic
- Foamed insulating profiles for increased thermal insulation

#### GASKETS

- Vulcanised shaped gasket pieces are used in the transom connection area and cover the complete joint area
- Optional single-piece or two-piece EPDM gaskets as external gasket
- Can be inserted on site without sealing material

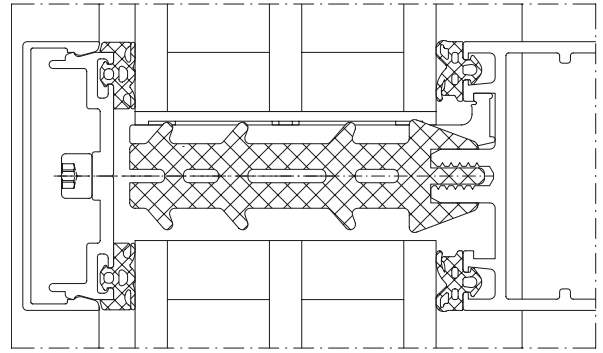
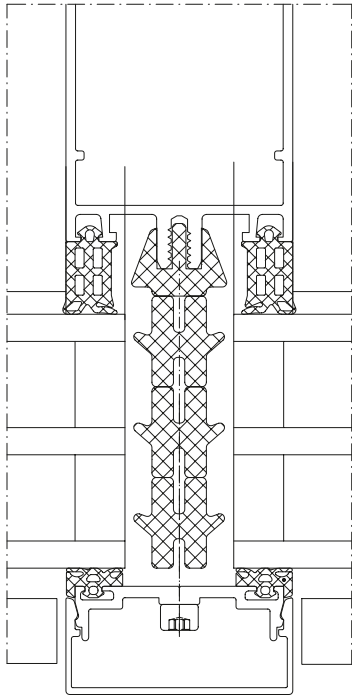
#### TEST RESULTS

- Thermal insulation:  $U_f = 1.0 - 3.2 \text{ W/m}^2\text{K}$
- Water tightness: static RE 1200, dynamic 250 Pa / 750 Pa (EN 12154 RE 1200)
- Air permeability class AE (EN 12152)
- Resistance to wind load: permitted load  $2.4 \text{ kN/m}^2$ , increased load  $3.6 \text{ kN/m}^2$ , (EN 13116)
- Bullet resistance up to FB6-S
- Burglar resistance WK1 / WK2 / WK3 (ENV 1627)

ALUMINIUM SYSTEMS @  
**HUECK**

**HUECK GMBH & CO. KG**

Loher Straße 9  
58511 Lüdenscheid  
T +49 2351 151-0  
F +49 2351 151-283  
info@hueck.com  
hueck.com



**View this product in 3D!**

Download our 3D-App on your smart-phone or tablet by scanning this code or searching for „Hueck“ at your App-Store (Android or Apple).

ALUMINIUM SYSTEMS @  
**HUECK**

**HUECK GMBH & CO. KG**

Loher Straße 9  
58511 Lüdenscheid

T +49 2351 151-0

F +49 2351 151-283

info@hueck.com

hueck.com