



ALUMINIUM SYSTEMS @
HUECK Lambda WS 090



**PRODUCT AND PROCESSING
ADVANTAGES**

- Sturdy, long-lasting profile construction with 90 mm profile depth for inward opening windows
- Glass thicknesses from 23-72 mm can be used – with standard gaskets for self-cleaning glazing as well
- Extremely thermally insulated aluminium windows system on passive house level and optimised insulation zone with insulating bridges made of innovative compound materials
- Optional use of concealed window hardware or established visible hardware
- Different design for internal and external views – from gentle curves through to consistent straight lines
- Production-optimised through few accessory items and use of the same parts
- Compatible with **HUECK Lambda** DS 090 and DS 090 FD door series

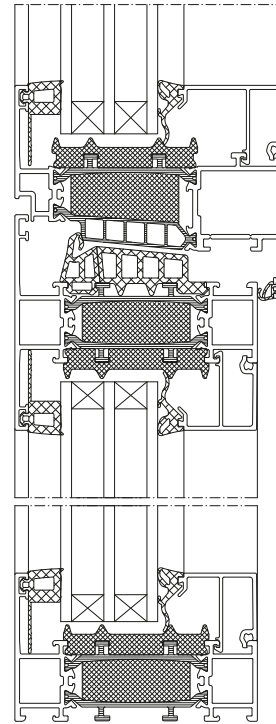
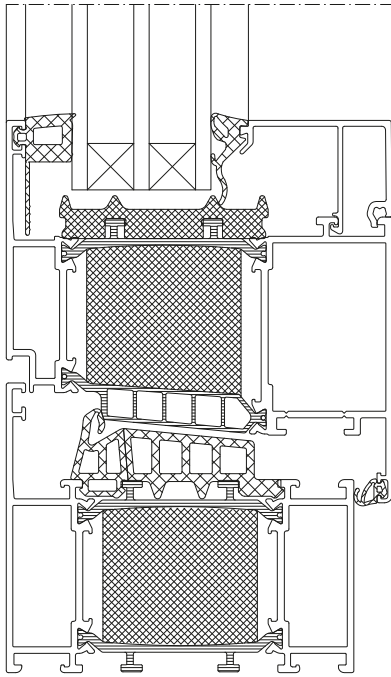
SYSTEM DATA

- Realisable window sizes (max. width / max. height): 1600 mm / 2400 mm
- Max. weight (standard hardware): 150 kg
- Thermal insulation: U_f ab (standard elevation width): > 0.7 (W/m²K)
- Burglar-resistance (DIN EN 1627): RC1, RC2 (N) and RC3
- Soundproofing (DIN EN 20140) up to R_w value: 49 db
- Water tightness (DIN EN 12208): class 9A
- Air permeability (DIN 12207): class 4
- Resistance to wind load (DIN 12210): class C5/B5
- Mechanical load (DIN EN 13115): class 4

ALUMINIUM SYSTEMS @
HUECK

HUECK GMBH & CO. KG

Loher Straße 9
58511 Lüdenscheid
T +49 2351 151-0
F +49 2351 151-283
info@hueck.com
hueck.com



View this product in 3D!

Download our 3D-App on your smart-phone or tablet by scanning this code or searching for „Hueck“ at your App-Store (Android or Apple).

ALUMINIUM SYSTEMS @
HUECK

HUECK GMBH & CO. KG

Loher Straße 9
58511 Lüdenscheid
T +49 2351 151-0
F +49 2351 151-283
info@hueck.com
hueck.com